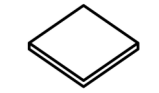
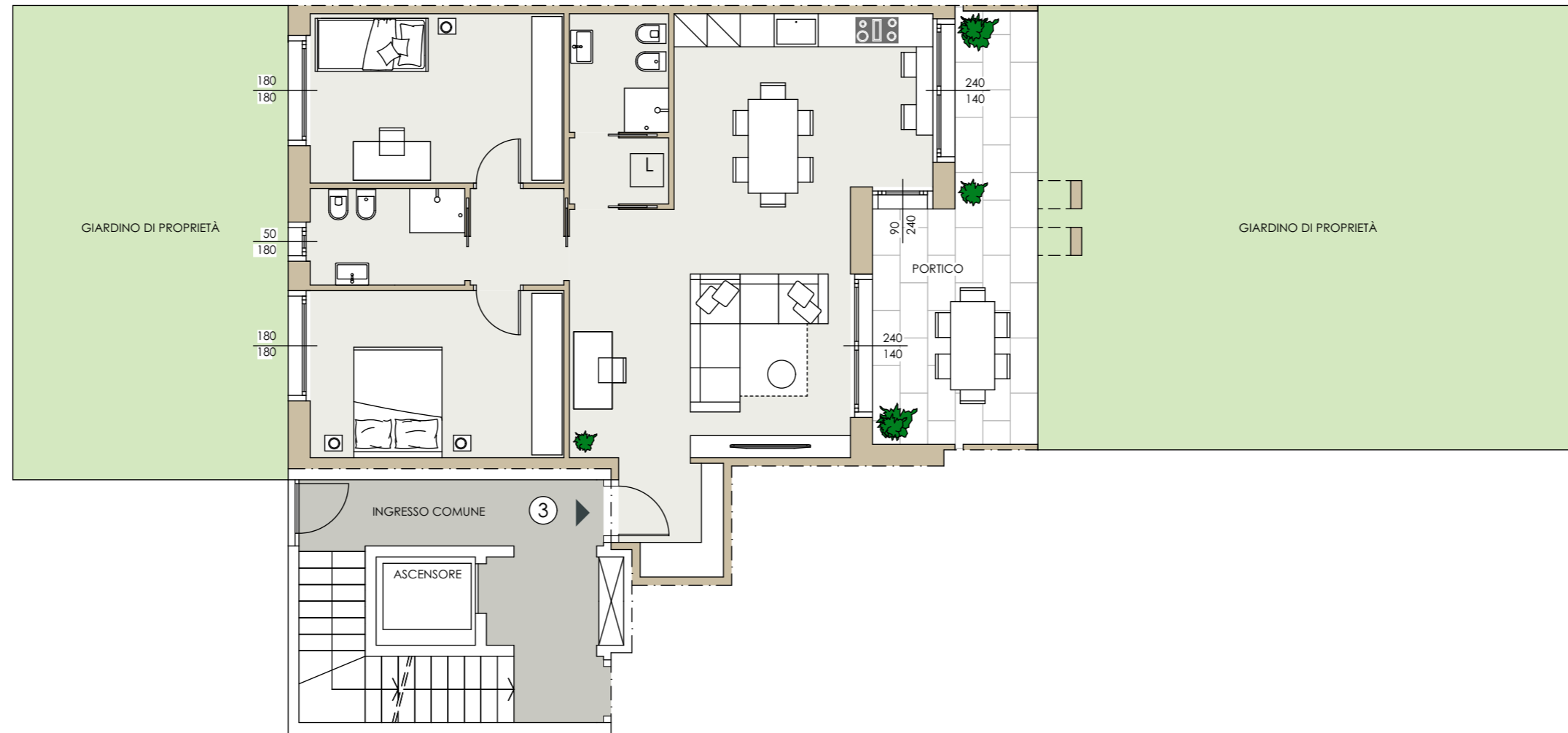
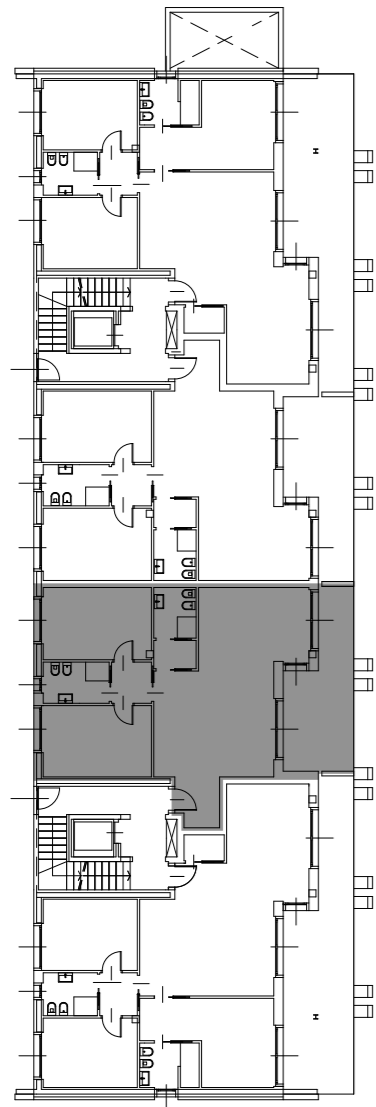
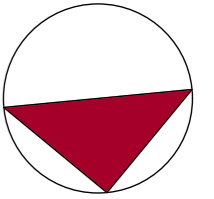
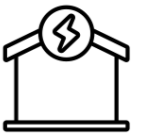


Abitazione	mq. 100,00
Portico	mq. 18,00
Giardino	mq. 120,00



MATERIALI
COSTRUTTIVI
SOSTENIBILI



ALTA
CLASSIFICAZIONE
ENERGETICA



TRATTAMENTO
ACQUA POTABILE



IMPIANTO
FOTOVOLTAICO



CASA GREEN



RICIRCOLO
ARIA PULITA

PIANO TERRENO