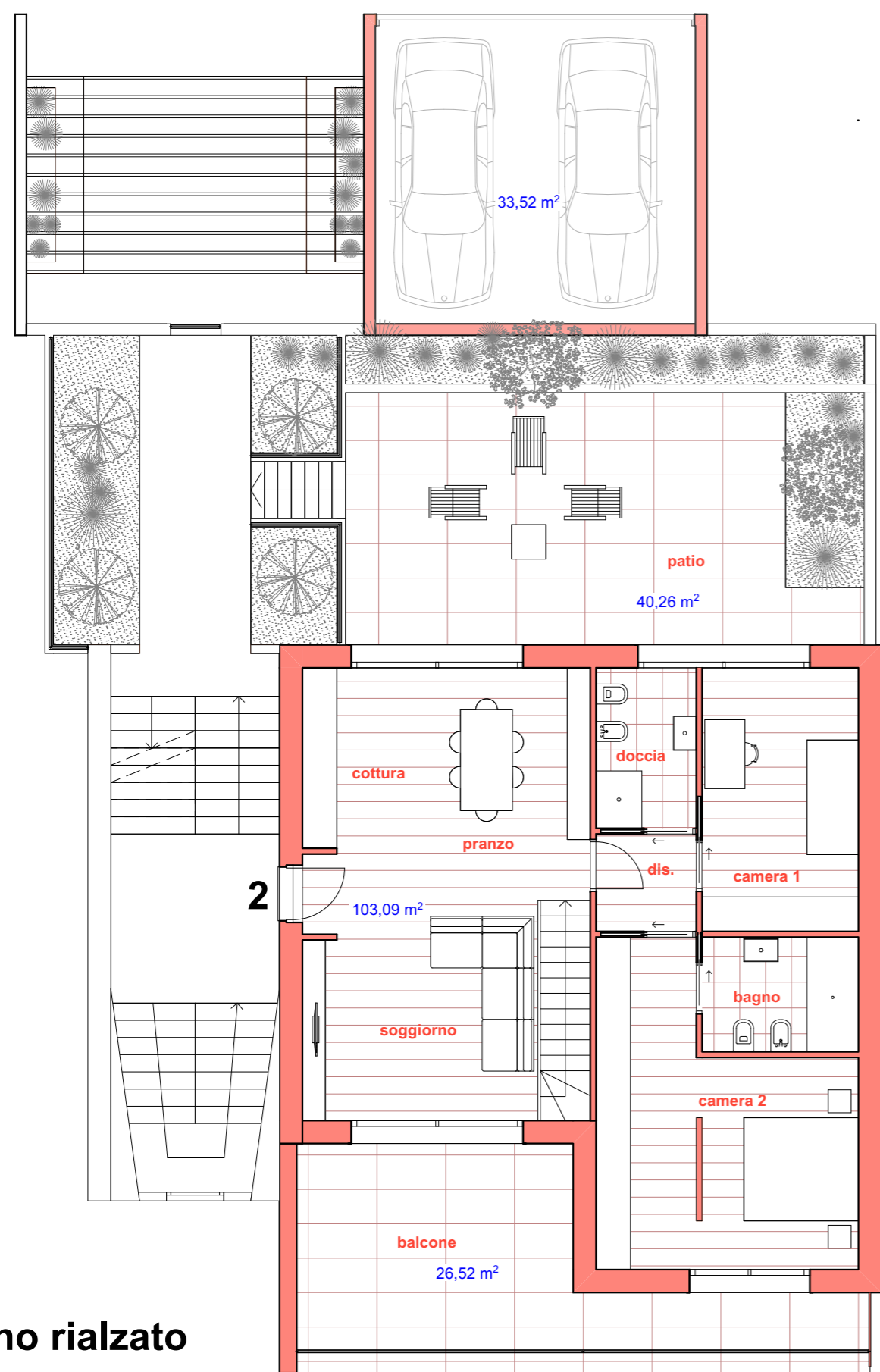
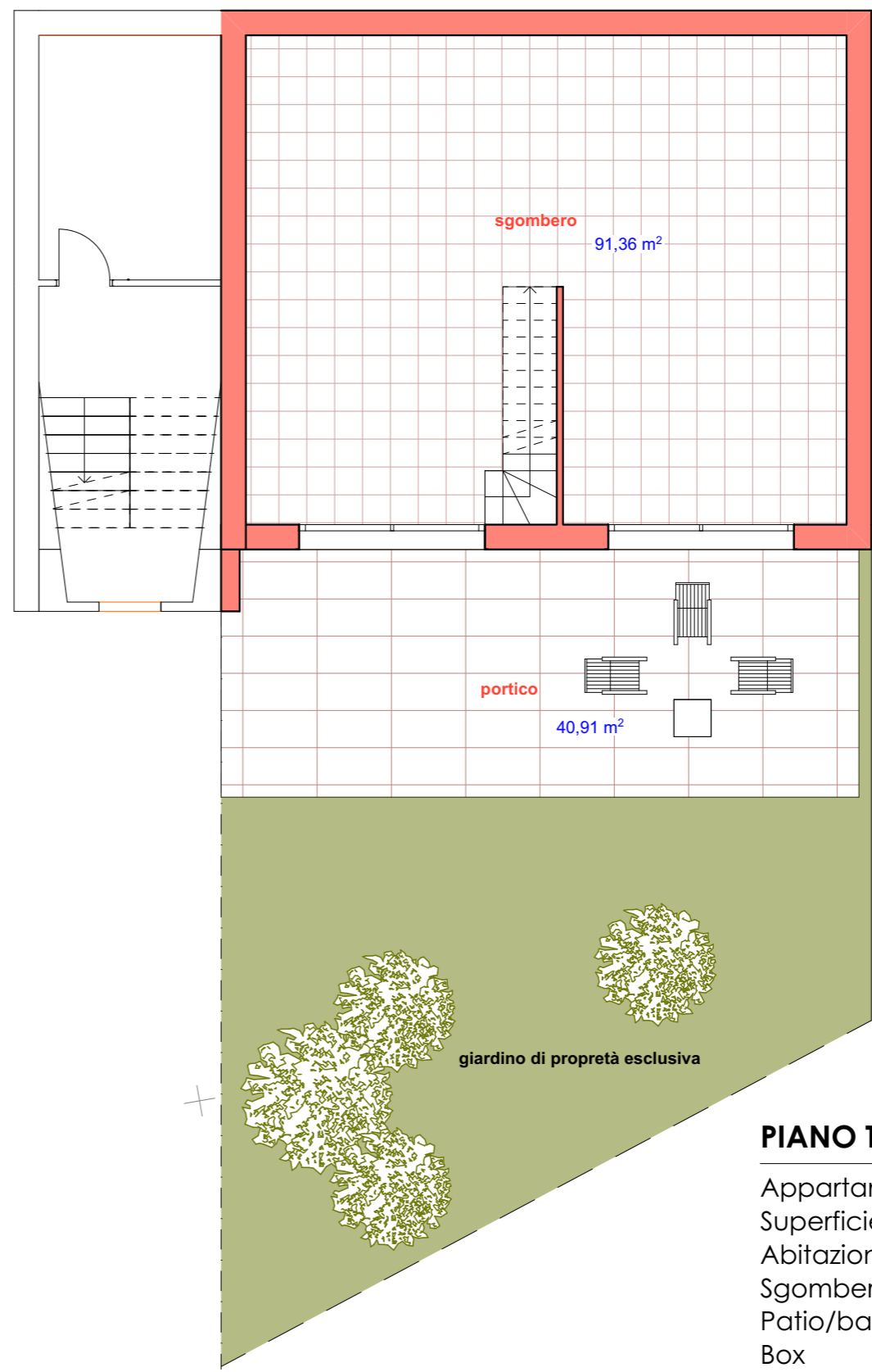


T. 0332 - 892508
 www.gabricasa.it



piano rialzato



piano terreno

PIANO TERRENO-RIALZATO

Appartamento n. 2
 Superficie commerciale:

Abitazione	mq. 103,09
Sgombero	mq. 91,36
Patio/balcone	mq. 66,78
Box	mq. 33,52
Portico	mq. 40,91
Giardino esclusivo	

VARESE - VIA TASSO