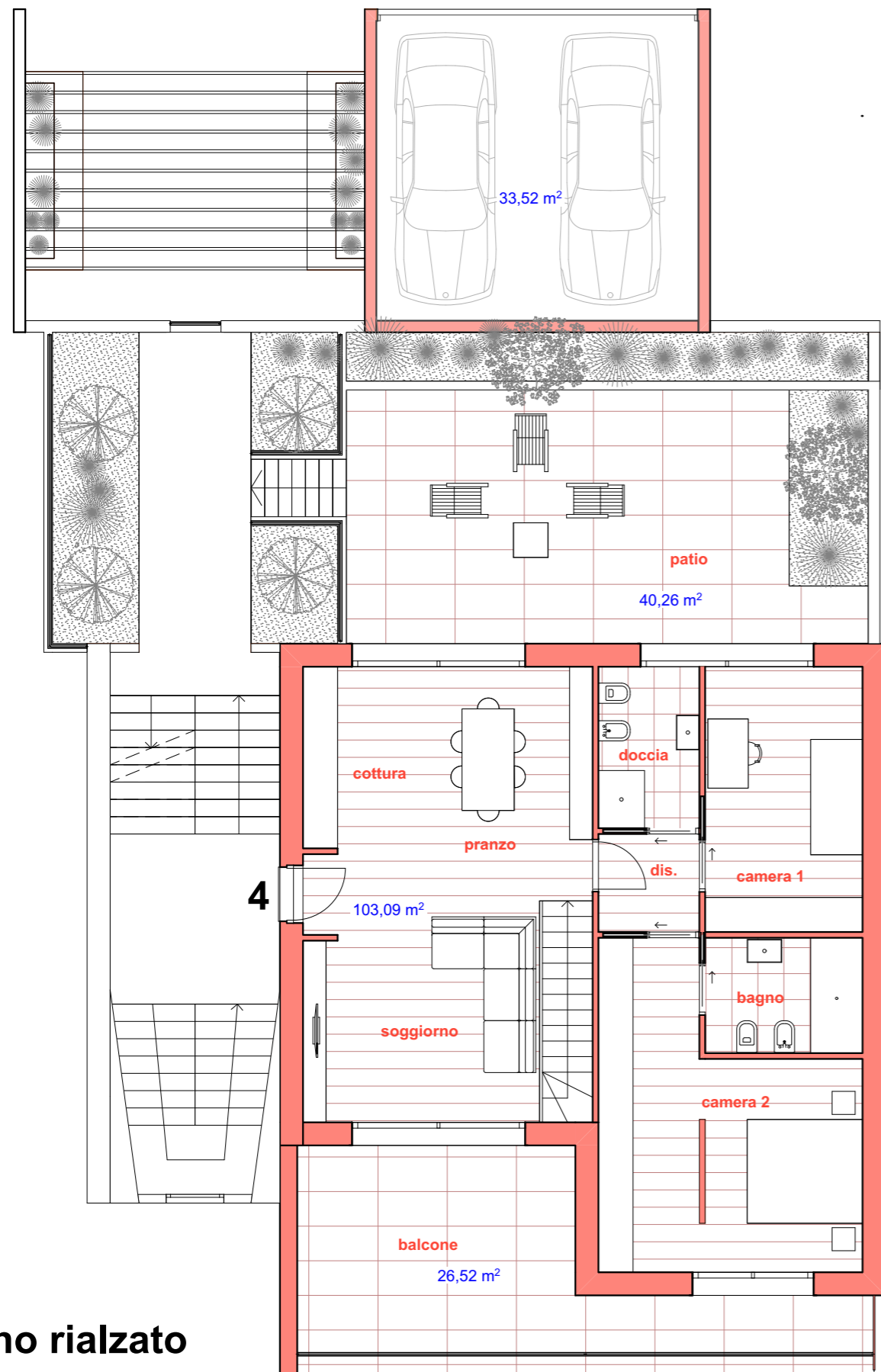
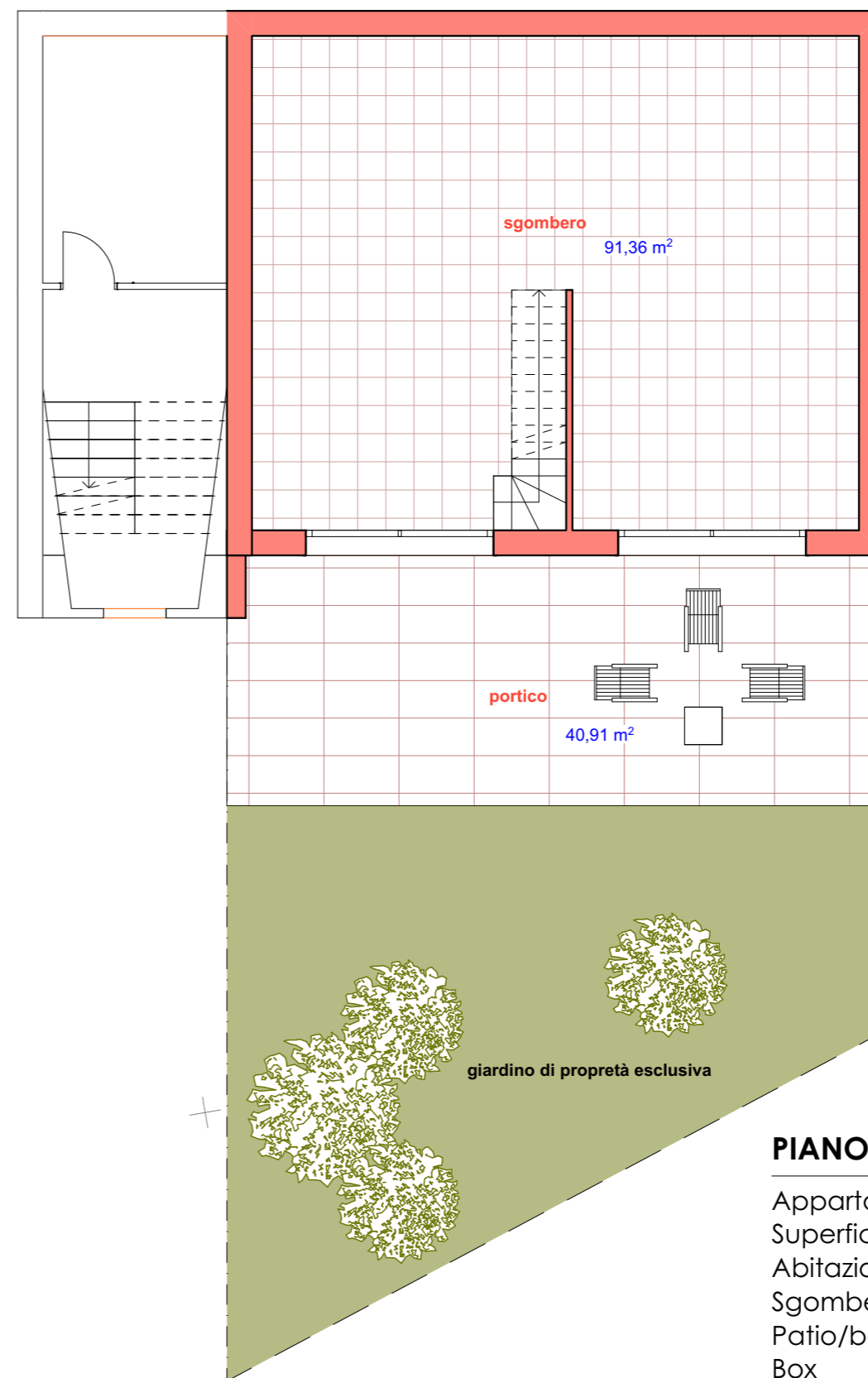


T. 0332 - 892508

www.gabricasa.it



piano rialzato



piano terreno

PIANO TERRENO-RIALZATO

Appartamento n. 4

Superficie commerciale:

Abitazione mq. 103,09

Sgombero mq. 91,36

Patio/balcone mq. 66,78

Box mq. 33,52

Portico mq. 40,91

Giardino esclusivo

VARESE - VIA TASSO